

Digital Label Presses and Finishing Systems



CX1200e
COLOR LABEL PRESS



FX1200e
DIGITAL FINISHING SYSTEM



PRIMERA
TECHNOLOGY, INC.

www.primeralabel.eu

Digital Label Printing

Make new profits with the reliable, affordable Primera CX1200e Color Label Press.

Digital full-color label printing has a wealth of significant benefits. But until now, digital label presses have been an expensive investment in both time and money.

That's why Primera developed its new CX1200e Digital Label Press. CX1200e delivers all of the most important benefits of high-end digital color label presses but at a fraction of the cost.



Exceptional Print Quality

CX1200e utilizes one of the fastest and highest-resolution color laser engines available. With its incredible 2400 dpi print resolution, the labels you produce will be as good as – or even better than – labels produced on digital presses costing hundreds of thousands of euros. Colors are bright and vibrant. Text is sharp. Bar codes and graphics are of the highest quality.

For precise color control, Pantone®-approved color support is included. Additional profiles for various substrates are available.

Impressive Performance

Print speed is 5 meters per minute. You can print up to 440m at a time, which nominally equals a 305mm diameter roll.

ADVANTAGES OF PRODUCING LABELS IN-HOUSE ON THE CX1200e COLOR LABEL PRESS AND FX1200e DIGITAL FINISHING SYSTEM:

- » Lower cost per label = higher profits
- » Fast and flexible
- » React quickly to market changes
- » Superior print quality
- » Simple operation – includes software that matches your workflow
- » Opens up new markets
- » Supports roll and sheet fed input

Perfect Rewinds

Primera's exclusive IntelliTorque™ tensioning control system continuously monitors tension across the web. It uses this feedback to apply variable torque on the rewind mandrel. You'll get perfect, tightly wound rolls every time. IntelliTorque is a first in this category of digital label presses.

Many Substrates

From pressure-sensitive papers to white and clear polyesters and more, CX1200e gives you maximum substrate flexibility. A wide range of approved matte, semi-gloss and high-gloss materials are available, allowing you to precisely match your substrate requirements. You can even print on specialty substrates such as magnetic sheeting, vinyls and woven fabrics.



APPLICATIONS:

- » Specialty, organic and gourmet foods and beverages
- » Wineries, breweries and distilleries
- » Coffee roasters and specialty teas
- » Cosmetics and personal care products
- » Nutraceuticals and vitamins
- » Private labeling
- » And more



CX1200e COLOR LABEL PRESS

- 1 Powered unwind station with quick-change chuck
- 2 Flat screen LCD mounting bracket (LCD monitor and PC are not included)
- 3 Rotary cutter for perfect end-of-job cuts
- 4 Color laser print engine with best-in-class 2400 dpi print resolution
- 5 LCD display allows operator to monitor print engine alerts
- 6 Fuser
- 7 IntelliTorque Tensioning Control System – ensures consistently tight rewinds
- 8 Powered rewind station with quick-change chuck
- 9 Bench with built-in lockable storage optional



Digital Label Printing



Simple Operation

From initial set-up through running big jobs, you'll find that CX1200e is one of the easiest pieces of equipment to operate that you own.

If you'd like additional help getting started, we offer free operator training at our offices in the USA, Europe, Asia Pacific and Latin America.

Advanced Inks and Cartridges



Primera's micro-fine dry toner-based inks have been formulated for substrate flexibility, robustness and low running costs. Abrasion and UV resistance is among the best in the industry.

The four extra high-capacity toner cartridges are easily replaced in just seconds from the front of the unit. An integrated memory chip assigns each cartridge with a serial number and keeps track of precisely how much toner remains. This lets you select exactly the right cartridges for the number of labels and the ink coverage you need to print. You'll never run out of ink in the middle of a job. You'll also utilize all of the toner in each cartridge, saving you money.



New Profit Opportunities

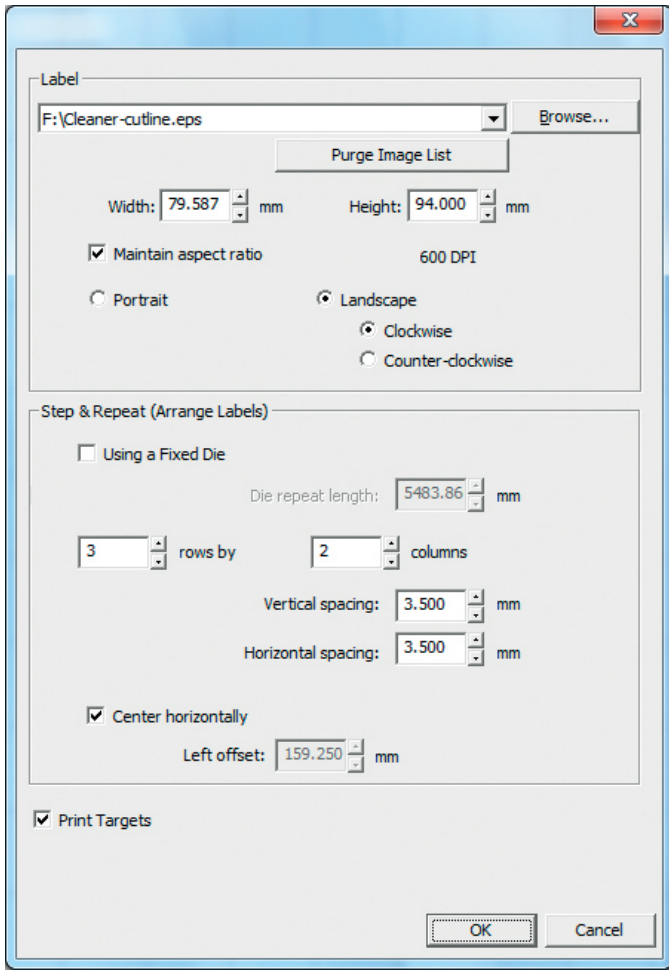
The CX1200e opens a whole new world of profit opportunities. Photo-quality, full-color labels are increasingly in demand.

Digital printing is the clear answer to satisfy this growing need while making impressive new profits for you.

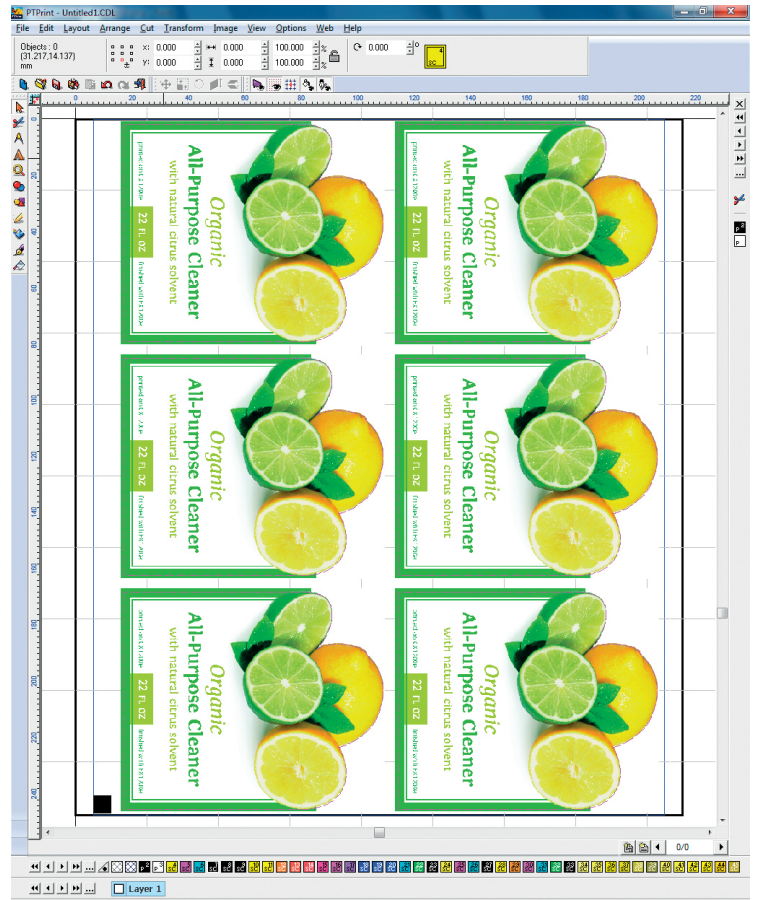
Software that Matches your Workflow

CX1200e comes equipped with Primera's PTPrint™ 8.0 for Windows® production software. This powerful yet easy-to-use software works the way you do, helping you to run your jobs in the most efficient manner possible. Features include:

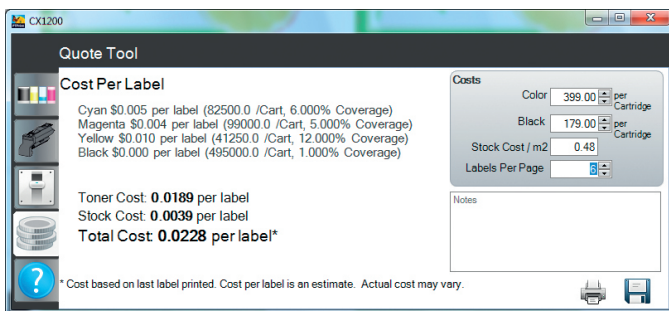
- » Importing of virtually all popular file formats: .jpg, .png, .eps, .tif, .bmp, .pcx, .pcd and more
- » Instant customer proofs
- » Estimating job costs
- » Calculating toner and substrate use through the PTPrint Status Monitor utility
- » Step-and-repeat
- » Printing of timing marks for use with off-line finishing equipment
- » Upgradable batch printing is available



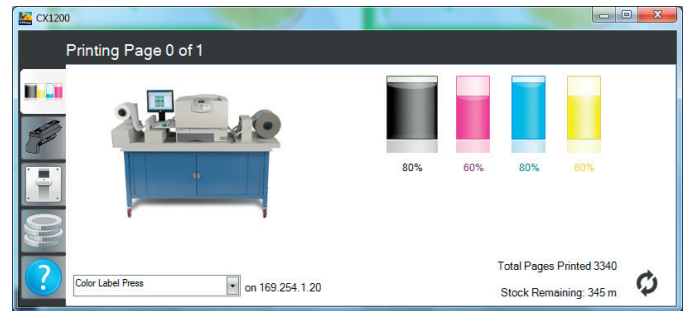
Import and "step-and-repeat"



Main operating screen



Job costing



Status monitor

The Best Digital Label Printing Solution

Whether you already own a high-end digital label press or are just getting started, CX1200e is the best short to mid-run digital label printing solution you'll find anywhere near its price.

Digital Label Finishing

Digital Label Finishing Has Never Been This Fast, Easy and Affordable!

Until now, digital label finishing has been expensive, complicated and not particularly well-refined. But no longer. Primera's FX1200e Digital Finishing System is here!

This innovative new machine is ready to meet the demands of converters and manufacturers who need reliable, professional-grade finishing equipment to complete their digital label production. FX1200e is an "all-in-one" off-line solution that produces rolls of finished labels produced by a variety of narrow-web output devices.

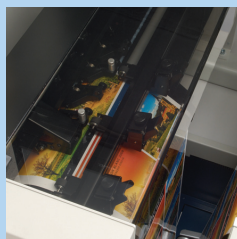
FX1200e DIGITAL FINISHING SYSTEM



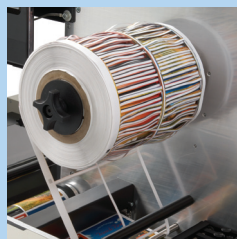
With FX1200e, you'll be able to quickly and easily perform all of these label finishing steps in a single, integrated and automated process:



Laminating



Digital die-cutting



Waste matrix removal



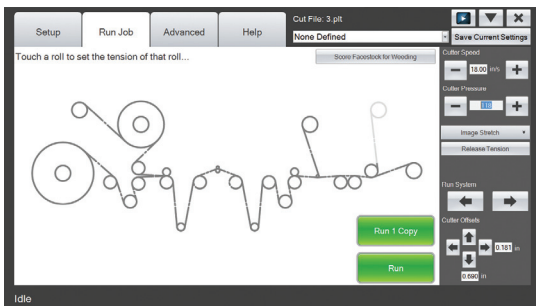
Slitting



Rewinding to finished rolls

Touch Screen Controls

All set-up and operation is controlled through an integrated touch screen PC. Most jobs take only a few minutes to set up and start running. You can easily adjust job parameters "on-the-fly" due to the significant built-in processing power and on-board memory – a unique feature in this category of digital finishing systems. The wide-screen color LCD display is easily visible in many different lighting conditions.



Cut Any Size or Shape without Dies

Instead of hard-tooled or flexible steel dies, FX1200e utilizes digitally-controlled tungsten carbide steel knife blades. With FX1200e you'll never have to buy a die or wait for it to be made and delivered. Your turnarounds will be faster and the time and cost savings are significant.

QuadraCut™ by Primera

Finishing speeds of up to 6 meters per minute are accomplished with Primera's exclusive QuadraCut™ technology (patent pending).

QuadraCut can use up to four knife blades at a time across the web. This feature dramatically increases throughput compared to systems that have just a single blade.

You can cut virtually any size or shape from various pressure-sensitive substrates, including matte and gloss paper, polyester, vinyl, polypropylene, BOPP and more.

A Complete Digital Solution

FX1200e is the perfect companion to a variety of narrow-web digital output devices, including Primera's best-selling CX1200e Color Label Press (color laser technology).

With Primera's digital printing and finishing equipment, you get a complete digital label printing and finishing solution from a single vendor at a new, breakthrough price.

Primera and the Environment



Primera strives to be an environmentally responsible provider of state-of-the-art digital label printing technology. As such, cartridge recycling is provided at no charge, throughout the world, for the life of the press. The result is less solid waste with fewer resources consumed. All of our products are compliant with RoHS and WEEE standards.

Innovative Technology from an Industry Leader

Primera's thirty-four year history of designing and manufacturing specialty color printers assures you that your investment will be backed by a strong, highly-respected USA-based company with offices around the world. Over a million printers have been built and sold in more than 179 countries.

Support to Keep You Up and Running

Primera's industry-leading technical support personnel are here to help keep your press up and running. Technicians are available by phone and email across the globe and in most major languages. Installation, training and repair programs are also available. In selected geographies, on-site scheduled maintenance and service is also available.

All regularly-scheduled maintenance can easily be performed by your own personnel. Besides toner cartridges, the only other consumables are the Image Transfer Unit (ITU), fuser and waste toner container.

Technical Specifications

CX1200e COLOR LABEL PRESS

Print speed:	83mm/second; 5 meters/minute
Print method:	Color laser
Display:	4-line, 160 x 64 pixel, backlit gray-scale display
Printer processor:	800/133 MHz
Media width:	216mm
Print width:	Up to 203mm
Print length:	Up to 440 meters per 305mm diameter roll of self-adhesive label stock (includes face sheet, adhesive and liner)
Substrate types:	Self-adhesive paper label stock and approved films
Printing quality modes:	1200 dpi x 600 dpi 1200 dpi x 1200 dpi 2400 dpi x 600 dpi
Ink supplies:	CMYK 4-color printing (Cyan, Magenta, Yellow, Black); 4950 meter extra high yield cartridges (rated according to ISO/IEC 19798 guidelines)
Software:	PTPrint™ 8.0 RIP Software for Windows; Pantone-approved color support; Easy to use graphical user interface
Input system:	Input roll maximum diameter: 305mm (12"); Core inside diameter: 76mm (3"); IntelliTorque Tension control system with automatic paper feed; Maximum input roll weight: 20 kg
Output system:	Output roll maximum diameter: 305mm (12"); Core inside diameter 76mm (3"); IntelliTorque Tension control system; Maximum output roll weight: 20 kg
Operating system:	Windows XP/7, 32-Bit
System recommendations:	<ul style="list-style-type: none"> » Intel® Pentium®-based PC or compatible, 2GHz processor or higher » 2GB RAM or higher » 50GB or more free hard drive space » VGA video display of 1024x768 or higher » Available 100/1000 Ethernet port
Dimensions:	Without bench: 193cmW x 56cmH x 56cmD With bench: 193cmW x 144cmH x 76cmD
Weight:	Without bench: Approximately 116 kg With bench: Approximately 207 kg
Operating environment:	Temperature: 20 to 23°C Humidity: 40 to 55% relative humidity Altitude: 0 – 2,000 meters
Power consumption:	220-240 VAC, 50/60 Hz Stand by (idle): 35 watts, max. peak: 1050 watts
Certifications:	CSA, ICES Class A, BSMI Class A, VCCI Class A, FCC Class A, UL 60950-1, IEC 60320-1, CE Class A, CB IEC 60950-1, IEC 60825-1, GS (TÜV), SEMKO, UL AR, CS, TÜV Rh, C-tick mark Class A
Warranty:	One year parts and labor. Usage limitations may apply.
Options:	Extended warranty Bench with built-in lockable storage Memory and software upgrade for batch label printing



VIEW CX1200e AND FX1200e PRODUCT VIDEOS FROM YOUR SMARTPHONE

Download a QR Reader app, then take a picture with your smartphone.

FX1200e DIGITAL FINISHING SYSTEM

Input roll max. diameter:	305mm
Output roll max. diameter:	305mm
Minimum web width:	114mm
Maximum web width:	216mm
Maximum die cutting width:	203mm
Minimum slitting width:	25mm
Minimum label length:	6mm
Maximum label length:	610mm
Throughput speed:	Up to 102mm per second or 6m per minute
Controls:	15.6" (diagonal measure) LCD touch screen, 16:9 wide panel, 1366 x 768 pixels; Emergency stop switch
Number of cutting knives:	1 to 4
Number of slitting blades:	1 to 7
Cutting technology:	Tungsten carbide pivoting knives
Cut file protocol:	HPGL
Optical sensing:	Dual two-zone
Cut speed (max. diagonal):	Up to 287cm per second when using four knife blades
Processor:	Intel® Atom™ 330 1.6GHz
Memory:	1GB DDR2
On-board storage:	160GB SATA 2.5" HD
Data interfaces:	USB 2.0, 10/100/Gigabit Ethernet, Wireless 802.11 b/g/n, USB memory stick
Dimensions:	198cmW x 76cmD x 142cmH
Weight (estimated):	226 kg
Power consumption:	100-240 VAC Stand by (idle): 50 watts, max. peak: 130 watts
Agency certifications:	UL, UL-C, CE, FCC Class A
Warranty:	One year parts and labor. Usage limitations may apply.
Options:	Lamination liner waste mandrel Extended warranty Cleaning brush kit

For detailed information on what digital label printing and finishing can do for you and your business as well as a printed and finished sample roll of your labels at no cost or obligation call +49 (0) 611 92777-0

PRIMERA
TECHNOLOGY, INC.

Two Carlson Parkway North
Plymouth, MN 55447-4446 USA
800-797-2772 (USA and Canada only)
Ph: 763-475-6676
Fx: 763-475-6677
www.primera.com
email: sales@primera.com

PRIMERA
TECHNOLOGY EUROPE™

Mainzer Strasse 131
65187 Wiesbaden
Germany
Ph: +49(0)611-92777-0
Fx: +49(0)611-92777-50
http://primera.eu
email: sales@primera.eu

PRIMERA
ASIA PACIFIC

Room 1206-7, 12/F New Victory House
93-103 Wing Lok Street
Central, Hong Kong
Ph: +61 3 8586 3030
Fx: +852-3014-7827
www.primera-ap.com
email: sales@primera-ap.com